

CHAMPIONS OF PROGRESS

We gratefully acknowledge our donors who invested more than \$1,000 in support of our mission to provide health, recovery, and growth to individuals and families across Connecticut. Read more about how philanthropic investments supported our work by scanning the QR code.



- | | | | |
|---|--|---|---|
| 443 Technologies
Lois Aaron
Access Health CT Small Business
Marian Acker
Allaire Elder Law
Jeffrey and Elizabeth Alquist
Amazon
American Express
AmerisourceBergen
Avanade
Thomas Barnes
Barnes Group Foundation
Melissa Barton and Alexander Hoerman
Christopher Beausoleil
Amy Borg
Bradley, Foster & Sargent Inc.
Bradley Henry Barnes and Leila Upson
Barnes Memorial Trust at the Main Street Community Foundation
Lori Ann and David Brantner Fund
Brown & Brown Insurance
Richard and Ann Bucchi
Camilliere, Cloud & Kennedy
Child Health and Development Institute
S. Tucker and Amber Childs
Steven & Alexandra Cohen Foundation | Community Chest of New Britain and Berlin
Community Foundation of Greater New Britain
Connecticut Health Foundation
Mary R. Connolly and Stephen Allaire
Estate of Lorraine Corsini
Downes Construction Company
Patricia Duclos-Miller
Rebecca Eleck-Bruce, MD
Eversource Energy
Eversource Energy Foundation Inc
Figure Eight Properties Inc
Genoa Healthcare
GetzBalich
Gibbs Interwire
Gnazzo Food Center
GO Agency
Gawdys Grullon
Charles and Karen Herbert
Lee Hoffman, MD
Holcomb Farm
Kaoud Oriental Rugs
Dennis and Mary Keenan
Karl Krapek, Sr.
Steven and Patti LeFebvre
Joanne Leon, PhD, LCSW
Tim Libassi | Liberty Bank
Linde
M&T Bank
M&T Charitable Foundation
Manafort Family Foundation
Mashantucket Pequot Tribal Nation
Mary McDonald
Jacqueline and David Mott
Mott Corporation
Jim and Janet Moylan
Mutual of America
Kimberly Nelson, LCSW
Brian O'Donnell
Mary C. Rodier, CPA
OneDigital Health and Benefits
OutFront Media
Prime Buchholz, LLC
Todd Raymond
Raytheon Technologies
Roger Recck
Pierre and Karen Richard
Mary and Louis Rodier
Lisa Roth
RYAN Business Systems, Inc.
Richard and Linda Salmon
School-Based Health Alliance
Nicolangelo Scibelli, LCSW
Southbury Women's Club | John Sponauer
Stanley Black & Decker
John Stephenson
Myron and Desiree Stewart
Suburban Office Products
Athena Szczesniak
Tecton Architects, P.C.
Jane and Dick Tedder
Ann E. Thomas and Michael B. Bonzagni
Gary and Judy Thomas
Thomaston Savings Bank
Rachel and Rich Tressy
William and Laurie Torres
Sabrina Trocchi, Ph.D., MPA
Michael Twist, MD
United Way of Central and Northeastern Connecticut
United Way of West Central Connecticut
Julie and Larry Vigil
Voya Financial and its employees
W.B. Mason Co., Inc.
Susan and Kenneth Walkama
Whittlesey
Dennis and Tamara Williams
Hyekyung Yang, Ph.D.
Yarde Metals |
|---|--|---|---|



A YEAR OF HOPE

A remarkable ribbon cutting and special event marked the opening of Wheeler's One Hope Street facility in Bristol, which combined services offered previously at 10 and 225 North Main Street.



Wheeler received several awards, including the *Hartford Courant* 2024 Top Workplace for the eighth year and recognition for managers, and was a 2024 Top Workplaces Industry winner for Healthcare. In 2023, Wheeler earned six Community Health Quality Recognition (CHQR) badges from the federal Health Resources and Services Administration, tied for the most in the state. In 2024, the organization also was designated as an "LGBTQ+ Healthcare Equality Leader" from the Human Rights Campaign Foundation. Most recently, Dr. Joshua Jones, a primary care physician based at Wheeler's Hartford community health center, was named a *Hartford Business Journal* Healthcare Hero.

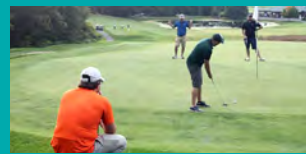


Wheeler continued to expand services to meet the dynamic needs of individuals and families. Innovative therapies for depression and anxiety, including Spravato® and Transcranial Magnetic Stimulation (TMS), are now offered in Hartford, New Britain, Waterbury, and Bristol. Walk With Me services for the LGBTQIA+ community continue to be enhanced with generous support from private foundations.

HOPE THROUGH PHILANTHROPY



Wheeler surpassed its expanded Campaign for Bristol fundraising goal of \$555,000, raising \$606,000 in gifts and pledges one and a half years ahead of schedule. Funds are supporting the organization's flagship administrative headquarters and community health center at One Hope Street, Bristol, which opened in the summer of 2024.



Wheeler's 39th Annual Golf Classic netted \$60,000 to support Wheeler's Basic Needs Fund, thanks to the generosity of donors, players, and volunteers.

Citing the sometimes-difficult financial balance for parents in frontline health care and teaching careers, an anonymous donor supported childcare and summer camp costs for Wheeler Health employees.



69,888

total number of patients with whom Wheeler interacted or provided direct care.

This data point reflects the following:

32,954

The total number of patients with whom Wheeler interacted through direct care, telephone, and outreach activities.

36,934

Inquiries to Wheeler's Access Line pertaining to statewide substance use, treatment, and support resources.

177,135

Outpatient visits at our Family Health & Wellness Centers, serving 20,963 unique patients.

Learn more at:

WheelerHealth.org/AnnualReport2024

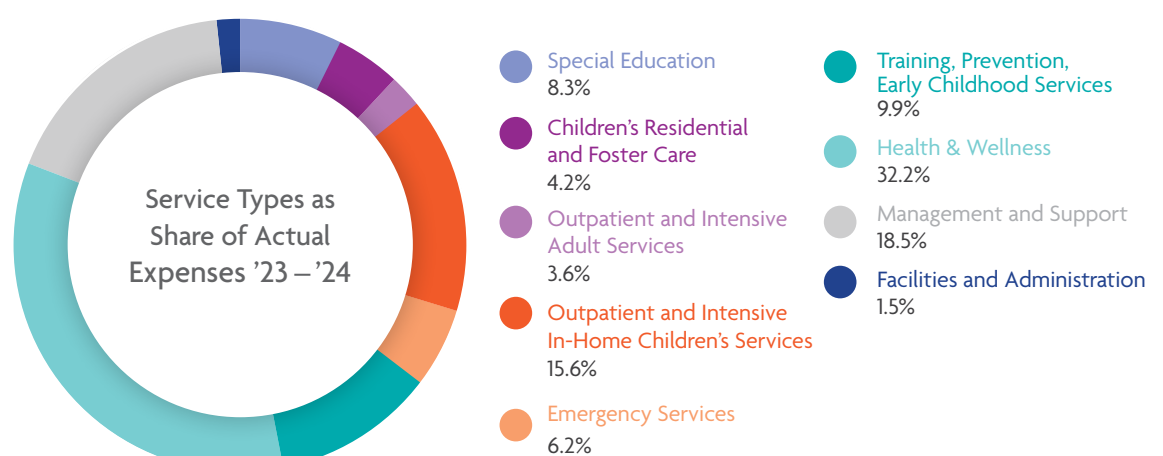
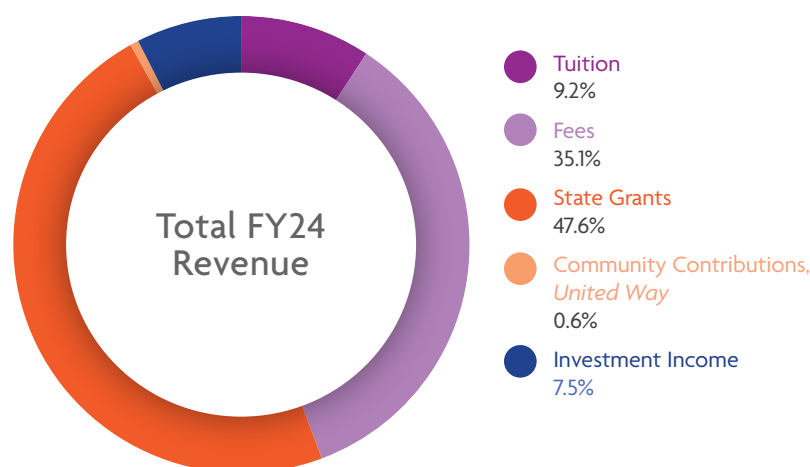


HOPE BY THE NUMBERS

Sound, transparent business practices ensure Wheeler's ongoing financial health and allow for investment in new program and service development.

TOTAL FY24 REVENUE:

\$96,931,910



MESSAGE FROM OUR PRESIDENT AND BOARD CHAIR

You Made Hope Possible.

Hope took many forms this year, from the delivery of services to nearly 70,000 people across Connecticut, to the remarkable opening of our new flagship administrative headquarters and health center at One Hope Street in Bristol.

We had an amazing year, and we could not have done it without YOU.

Because of you, we brought to life our vision for a new 46,000-square-foot community health center in Bristol. Our move to One Hope Street not only embodies our collective hope for this city and its residents, but our hope for every patient we serve across Connecticut.

Because of you, we expanded innovative treatment for depression to Waterbury. We broadened services for expectant mothers with substance use disorders and their families with support from the Connecticut Department of Mental Health and Addiction Services.

With gratitude,

Sabrina Trocchi, PhD, MPA

Sabrina Trocchi, PhD, MPA
President and Chief Executive Officer

We expanded access to care to hundreds of people in Bristol, Plainville, and New Britain through our mobile health and wellness center, providing essential screening services and linkages to additional care. We provided basic needs assistance to individuals and families through our Basic Needs Fund. We served hundreds of students in Bristol and New Britain through our school-based health centers.

Your support also helped foster increased patient growth, and our services continued to grow with nearly \$11 million secured in federal and state funding and private foundation grants.

Thank you for embracing hope. Thank you for all that you do to support our commitment to patients and communities.

Mary C. Rodier, CPA

Mary C. Rodier, CPA
Chair, Board of Trustees, FY24



BOARD OF TRUSTEES 2023-2024

OFFICERS

Mary C. Rodier, CPA
Chair

Charles J. Herbert, CFP
Vice Chair

Julie Vigil, MS, MPH,
CHC, CHRC, FACHE
Secretary

Rachel Tressy, CPA
Treasurer

Sabrina Trocchi, PhD, MPA
President and CEO

Shaunna Monts, MBA,
SPHR, SHRM-SCP
Assistant Secretary

MEMBERS

Marian Acker, CPA

Melissa Barton, MBA

S. Tucker Childs, CFA, CFP

Mary R. Connolly

Patricia Duclos-Miller,
MSN, RN, NE-BC

Gawdys Grullon, MPA

Charles F. Herbert, CFP

Lee Hoffman, MD

Joanne León, PhD, LCSW

Brian O'Donnell, JD

Mary C. Rodier, CPA

Myron P. Stewart, MBA

Rachel Tressy, CPA

Julie Vigil, MS, MPH,
CHC, CHRC, FACHE

Dennis R. Williams, MBA

Hyekyung Yang, PhD

OUR VISION

All people will have the opportunity to grow, change, and live healthier, productive lives.

OUR MISSION

Wheeler provides equitable access to innovative care that improves health, recovery, and growth at all stages of life.



COMMUNITY | HEALTH | CARE

91 Northwest Drive, Plainville, CT 06062
888.793.3500 • WheelerHealth.org

NON-PROFIT ORG.
U.S. POSTAGE
PAID
BRISTOL, CT
PERMIT NO. 503



LICENSURE AND ACCREDITATION

Connecticut Department of Children and Families
Connecticut Department of Education
Connecticut Department of Public Health
The Joint Commission
National Committee for Quality Assurance



COMMUNITY | HEALTH | CARE

Hope in Action. Creating Brighter Futures.

2024 | ANNUAL REPORT

More Than 55 Years of Building a Healthy Community

