

Giving From The Heart

WINTER 2025

Hands & Hearts 2024 Honorees



We're Grateful for Your Support

Wheeler recently honored four donors for outstanding support of its mission at the organization's 14th Annual Hands & Hearts event, held virtually, on December 12.

Wheeler's Hands & Hearts event recognizes individuals and families, corporations, and foundations for helping Wheeler to provide equitable access to innovative care that improves health, recovery, and growth at all stages of life. Wheeler has recognized more than 100 philanthropists since the inception of this event.

The 2024 Hands & Hearts Appreciation Award recipients are:

Amy Borg – Wheeler Donor, Foster Parent

Formerly a resident of Farmington, Connecticut, Amy Borg has been a Wheeler donor since 2008 and became a Wheeler foster parent in 2020. While with Wheeler, Amy fostered 18 children and youth through full-time, short-term, and respite care.

Steven & Alexandra Cohen Foundation

Thanks to a \$110,000 grant from the Steven & Alexandra Cohen Foundation, Wheeler is expanding services for the LGBTQ+ community. The funds support Wheeler's "Walk With Me" program at its Family Health & Wellness centers in Hartford, New Britain, Plainville, and Waterbury, Connecticut, and extend the program and its services to Wheeler's Bristol, Connecticut, center.

The Steven & Alexandra Cohen Foundation, led by President Alex Cohen, is committed to inspiring philanthropy and community service by creating awareness, offering guidance, and leading by example to show the world what giving can do.

Patricia Cruickshanks – Mott Corporation Volunteer

Patty Cruickshanks, now residing in Florida, was formerly an active volunteer representing Farmington-based Mott Corporation, coordinating much of the partnership between Wheeler Health and Mott, exemplifying an extraordinary commitment to community well-being.

Charles J. Herbert, CFP – Longtime Wheeler Trustee

For a decade, Charles Herbert has been one of Wheeler's most dedicated trustees who instinctively understands Wheeler's mission and the role of volunteerism and generosity. Charley has served on the board in multiple capacities, from fundraising, support for Wheeler's annual golf classic, on the finance committee, guiding the organization's retirement plan administration, and last year, stepping in as interim chair.

Scan the QR
code to
learn more.





COMMUNITY

GRANT SUPPORTS LGBTQ+ SERVICES

Wheeler received a \$110,000 grant from the Steven & Alexandra Cohen Foundation. The funds will support the “Walk With Me” program at its Family Health & Wellness centers in Hartford, New Britain, Plainville, and Waterbury, Connecticut, and extend the program to Wheeler’s Bristol, Connecticut, center.

“Walk With Me” is a therapeutic treatment track for lesbian, gay, bisexual, transgender, nonbinary, and



questioning (LGBTQ+) patients of all ages and provides services such as individual, family, and group therapy, affirming psychiatric evaluation and care, behavioral health

services, inclusive and affirming peer support services, primary care, sexual health screenings and treatment, Pre- and Post-Exposure Prophylaxis prescriptions, and gender-affirming hormone therapy for patients aged 18 and over.

“Walk With Me” was launched in 2021 in Plainville through a \$100,000 philanthropic investment from an anonymous donor. Thanks to the generous support of the Steven & Alexandra Cohen Foundation, the program will now be available at the organization’s Bristol center, marking the expansion of “Walk With Me” to all Wheeler Family Health & Wellness Centers.

“We are grateful to the Steven & Alexandra Cohen Foundation for its support as we expand the ‘Walk With Me’ program—and its specialized, live-saving support services—to reach more people and create a healthier, more inclusive Connecticut,” said Sabrina Trocchi, PhD, MPA, and Wheeler’s president and chief executive officer.

Wheeler Health’s two full-time peer specialists will support its five health centers. The grant also provides additional support for specialized staff training on serving the LGBTQ+ community.



HEALTH

THE CIGNA GROUP FOUNDATION EXPANDS ACCESS TO HEALTH CARE

With a new \$250,000, multiyear grant, The Cigna Group Foundation is expanding access to health care in Hartford through a partnership with Wheeler Health.

Wheeler will use the grant to staff and deploy a new mobile health van for community outreach and education, preventive health screenings, primary care, chronic disease management, and health insurance navigation to Hartford residents at dozens of locations throughout the city.

“With support from The Cigna Group Foundation, we are meeting the residents of Hartford where they are in their health, and where they are in the community,” said Sabrina Trocchi, PhD, MPA, Wheeler president and chief executive officer, and a Hartford native. “We’ll be there in parks, community centers, housing complexes, libraries, parking lots, or churches. This is truly community-based health care.”

Wheeler’s mobile health van will increase ease of access to services, enhance care coordination and linkages to additional



specialty primary care and behavioral health services, and improve patients’ ability to navigate the health care system. This will reduce negative health outcomes, unnecessary hospitalizations, and gaps in care, and link patients to community health care providers, like Wheeler’s federally qualified health center at 43 Woodland Street, Hartford.

The van, funded through a Connecticut Department of Public Health’s Health Disparities and Prevention Grant, joins Wheeler’s larger vehicle, which served the central Connecticut region for more than two years.



CARE

SPREADING HOPE.

A deep and sincere thanks to the employees of **Mott Corporation** for filling more than 200 holiday requests, particularly every request coming from children in our Foster Care program.



Thanks to our corporate partners and Wheeler staff, we filled 650 holiday requests for children and their families this past holiday season. Our friends at **Americold Logistics** in Plainville came through for the second year in a row, donating toys and clothing to match specific requests. **Amazon.com** provided more than 30 boxes of toys.



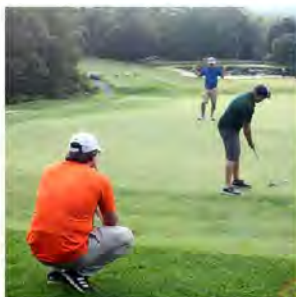
FEELING THANKFUL.



With support from our steadfast partners at **Holcomb Farm** and **Gnazzo's Supermarket**, we provided more than 350 bags of groceries for our patients in need during Thanksgiving. Our team and our patients are so grateful!

SAVE THE DATE!

Wheeler's **40th Annual Golf Classic** happens on **September 17, 2025** at the Country Club of Farmington. Join us for a great day of golf while benefitting individuals and families in our care. Sponsors, players, and volunteers are welcome! Stay tuned for more details at WheelerHealth.org/GolfClassic.



2024-2025 Annual Fund

YOUR support, YOUR commitment,
YOUR vision *can change*,
and literally save, lives.

Yes! I want to support:

- Basic Needs Fund \$ _____
- Basic Needs Fund, Northwest Village School \$ _____
- Where my gift is needed most \$ _____
- Other: _____ \$ _____

Enclosed is my total gift of \$ _____

Check Enclosed
(Please make payable to Wheeler)

Please charge my donation to:

- Visa Mastercard Discover AmEx

Name

Credit Card Number

Exp. Date Security Code

Signature

My gift is in memory of: _____

My gift is in honor of: _____

Please notify: _____

My employer will match my contribution.

I have enclosed a matching gift form.

I am interested in Planned Giving.

Mail using the enclosed envelope to:
Wheeler
Office of Philanthropic Giving
91 Northwest Drive
Plainville, CT 06062

Or scan this QR code with your cell phone to make a donation.





COMMUNITY | HEALTH | CARE

One Hope Street, Bristol, CT 06010
888.793.3500 • WheelerHealth.org

NON-PROFIT ORG.
U.S. POSTAGE
PAID
BRISTOL, CT
PERMIT NO. 503



OUR HEARTS ARE FULL.

Thanks to your generous support of our Basic Needs Fund, we've served more than 9,500 individuals and families in Connecticut since 2018.

More support is needed!



WheelerHealth.org/BasicNeeds

